



701½ West First Street
Defiance, OH 43512
Phone 419-782-6211
architects@beilharzinc.com

March 1, 2019

STRYKER LOCAL SCHOOLS
1957 Building Renovation
Stryker, Ohio

B6-4512

ADDENDUM NO. 4

This Addendum becomes a part of the Contract Documents and modifies them only to the extent herein set forth. Each prime bidder is responsible for distribution of information conveyed by this Addendum to its subbidders and suppliers.

Attachments: Bid Form (revised)
Chord Reinforcement Details
Addendum Drawings AE121a, AE305a

ITEM NO. 1: 004114 – Bid Forms

Bids received February 19 have been rejected and will be rebid. Bids will be received until **1:30 p.m. EDT, Thursday, March 14, 2019**. Submit bids on the attached revised Bid Form.

ITEM NO. 2: Section 012300 – Alternates

Add the following to paragraph 1.02

E. Alternate 5: Auditorium Scaffolding

1. Base Bid Item: Provide access to work areas as required; refer to Section 01 5000.
2. Alternate Item: Provide scaffolding for a level work surface in the Auditorium, for the duration of overhead work in the space.

F. Alternate 6: Auditorium Ceiling

1. Base Bid Item: Auditorium ceiling shall be Type SA2E acoustical ceiling panel assemblies with perimeter trim; refer to attached Addendum Drawings AE121a and AE305a, and Section 09 5100 item below.
 - a. Air Distribution Device Schedule, Sheet H-601: C2 and L2 linear slot diffusers shall be lay-in mounting type in lieu of surface.
 - b. First Floor Lighting Plan, Sheet E-121: Luminaires located in suspended acoustical ceiling panels shall be A2 and A2E in lieu of A1 and A1E; refer to Sheet E-002 item below.

2. Alternate Item: Auditorium ceiling shall be acoustical ceiling cloud panels; refer to Sheets AE121 and AE305, and Section 09 8400.

G. Alternate 7: Kool Duct

1. Base Bid Item: Ductwork for RTU-2 and RTU-3 shall be acoustically lined double wall spiral lock seam duct; refer to Sheet H-701, paragraph 23.
2. Alternate Item: Ductwork for RTU-2 and RTU-3 shall be Kingspan Kool Duct.

ITEM NO. 3: Section 09 5100 – Acoustical Ceilings

Add paragraph 2.01.F: Perimeter Trim System: Extruded aluminum; flush face profile, width as indicated; factory welded and finished corners; baked enamel finish, black color; with splice plates, T-bar connection clips and hanging clips as indicated and as required. (Armstrong Axiom; Chicago Metallic Infinity; USG Compäso)

Add the following to paragraph 2.02:

- G. Acoustical Panels (Type SA2E): ASTM E1264; mineral fiber or fiberglass; 24 x 24 inches, 1 inch thick; black color. (CertainTeed Open Plan 1442; USG Mars 88137)
1. Noise Reduction Coefficient (NRC): ASTM E1264; minimum 0.90.
 2. Suspension System: Exposed non-fire rated steel grid, black steel cap, with perimeter trim system.

ITEM NO. 4: Division 23 - HVAC

Delete Sections 23 09 00, 23 09 13, and 23 09 23. DDC controls will be provided by Owner.

ITEM NO. 5: Sheet SR101 – Framing Plans

General Framing Notes: Delete notes 5 and 22.

Partial Second Floor/Metal Shop Roof Framing Plan 2: Delete equipment frames and joist modifications for AC-2 and AC-3. Delete equipment frame east of AC-6.

Equipment Frame Detail 11: Revise section reference to Detail 12/SR101.

Steel Joist Modifications 13: Delete joist modifications for AH-2, AH-3, AC-2, and AC-3.

Modification Detail 14: For bidding purposes, channel size shall be C6x10.5.

Modification Detail 15: For bidding purposes, rod diameter shall be ¾”.

RTU-2 and RTU-3: Refer to Sheet H-102 item below for locations, and Sheet AE102 for auditorium roof framing.

1. Provide rooftop unit frame similar to Detail 11/SR101 at top chord of existing joists. For bidding purposes, for each rooftop unit provide 3½ x 3½ x 5/16” steel angles 30’-0” long each side of frame with 4 cross frames 8’-0” long. Verify dimensions with equipment supplier prior to fabrication.

2. For each unit, include reinforcement in accordance with attached Chord Reinforcement details.
 - a. Include bottom chord reinforcement at 4 truss panels for each unit.
 - b. Include interior web reinforcement with gusset plates at 2 truss panels for each unit.

ITEM NO. 6: Sheet AD101 – First Floor Demolition Plan

Keynote 5: Removal and storage of music cabinets will be by Owner. Reinstall as indicated on Sheet AE402.

Delete Keynote 67.

Auditorium: At existing north-south floor joint, grind 5/8" concrete lip between concrete pours for smooth transition, full width of room.

ITEM NO. 7: Sheet AD102 – Second Floor Demolition Plan

On west wall of corridor, omit removal of wall indicated by Keynote 54.

ITEM NO. 8: Sheet AE102 – Second Floor Plan

Upper Auditorium: Omit catwalk (Keynote 21).

Storage 224: Omit Door 224A; existing wall to remain.

ITEM NO. 9: Sheet AE304 – Wall Sections

Delete Catwalk Details 3 and 4.

ITEM NO. 10: Sheet AQ101 – Enlarged Equipment Plans

Vo-Ag Lab Equipment Schedule: Delete T5 spray booth and T6 flammable cabinet.

ITEM NO. 11: Sheet P-101 – Plumbing Plans

Partial First Floor Plumbing Plan: Refer to Sheet H-102 item below for rooftop units. Gas piping to RTU-1, RTU-2, and RTU-3 shall be above roof.

Partial Second Floor Plumbing Plan: At roof above Metal Shop 186, change AC-4 to RTU-1.

ITEM NO. 12: Sheet H-101 – HVAC First Floor Plan

Metal Shop 186: Delete EF-4 and associated exhaust ductwork and roof hood.

ITEM NO. 13: Sheet H-102 – HVAC Second Floor Plan

Upper Auditorium: Delete AH-2 and AH-3 and associated AC-2 and AC-3 and roof hoods and refrigerant piping; add rooftop units RTU-2 and RTU-3 of equivalent capacity, equipped with economizers and convenience outlets. Locate on roof at the approximate locations shown for AH-2 and AH-3, one unit on upper (west) roof and one unit on lower (east) roof. Set units on structural curbs and span maximum number of joists. Maintain manufacturer's recommended clearance at west end of

RTU-2. Maintain minimum 10 feet from each unit to roof edge, or provide guard. Refer to Sheet SR101 item above for structural requirements.

ITEM NO. 14: Sheet H-601 – HVAC Schedules

Air Handling Units: Each air handling unit shall include flue and combustion air duct routed to the exterior as required by OMC, OPC, and NFGC. Each air handling unit shall have a control terminal strip.

ITEM NO. 15: Sheet H-602 – HVAC Schedules

Rooftop Heating & Cooling Units: Additional manufacturers are Aaon, Krueger, and Tempmaster. Equipment other than Basis of Design shall have equivalent capacity and cfm, and provide equivalent control of space conditions. Each RTU shall have a standalone BACnet IP card.

ITEM NO. 16: Sheet H-701 – HVAC Specifications

Paragraph 56: Additional manufacturers are Aaon, Krueger, and Tempmaster.

Add paragraph 59: Gas Piping. In addition to Section 22 2123 and Plumbing drawings, meet the following requirements:

1. Materials and installation shall conform to standards and requirements of the Gas Company, International Fuel Gas Code and NFPA 54 National Fuel Gas Code. Welders shall be certified.
2. Shutoff valves shall be provided as needed, provide a handle with each valve.
3. Valves, unions and threaded joints are not permitted in inaccessible concealed locations. Valves shall not be located in ceiling air plenums and other air plenums or ducts.
4. A shutoff valve and a dirt and moisture leg with screwed end cap shall be provided on the pipe drop to each item of equipment.
5. Gas pressure regulators shall be installed in accordance with manufacturer's instructions. Provide valved gauge taps upstream and downstream of the regulator and a pressure gauge on the downstream side. Provide pilot regulator piping and miscellaneous valves, devices and piping to complete the installation.
6. Vent piping shall be extended individually from each regulator and gas venting device to outside the building.
7. Purging of fuel gas piping shall be conducted in accordance with the criteria and procedures outlined in the International Fuel Gas Code for the opening of existing piping systems and/or the placing of new or revised piping systems in operation.
8. Gas pressure regulators shall be self-operating spring loaded type. Valve body shall be cast iron, 125 psi construction with screwed or flanged connections. Spring and diaphragm casings shall be aluminum. Regulator shall have an internal relief valve assembly and tapped vent connection with

removable screen on the spring casing. Overpressure protection shall be ten times the inlet pressure (or higher as may be required by the gas company).

9. Provide a sealed wall sleeve at the service entrance to prevent gas leaks from entering the building.
10. Underground and above ground piping shall be pressure tested in accordance with Gas Company regulations. Test and metering - recording equipment shall be provided by the Contractor.

ITEM NO. 17: Sheet E-002 – Motor & Luminaire Schedules

Luminaires:

1. A1: Delete DWHG from model number; provide color as scheduled.
2. Add A2 and A2E, similar to A1 and A1E except recessed mounting with black painted flange.

ITEM NO. 18: Sheet E-111 – First Floor Power Plan

Metal Shop 186: Refer to Sheet AQ101 and Sheet H-101 items above for deletion of T5 spray booth and exhaust fan EF-4.

ITEM NO. 19: Sheet E-112 – Second Floor Power Plan

Refer to Sheet H-102 item above for deletion of AH-2, AH-3, AC-2, AC-3, and addition of RTU-2 and RTU-3. Coordinate power requirements with equipment supplier.

ITEM NO. 20: Sheet E-122 – Second Floor Lighting Plan

Upper Auditorium: Delete catwalk lighting and switch.

END OF ADDENDUM

BID FORM

(Submit two copies of Bid Form and all attachments)

BIDDER: _____

PROJECT:

Stryker Local Schools
1957 Building Renovation
400 South Defiance Street
Stryker, OH 43557

BIDS DUE AT:

Stryker Local Schools
Board of Education
400 South Defiance Street
Stryker, OH 43557

BIDS DUE BY: Thursday, March 14, 2019, 1:30 p.m. EDT

Having read the bid documents and specifications and examined the drawings prepared by the Architect, Beilharz Architects, Inc., Defiance, Ohio, for the item of work described above, and having inspected the site and the conditions affecting and governing the construction of the said project, and acknowledging that the bid documents, specifications and drawings are adequate for the performance of the Work, the undersigned hereby proposes to furnish all materials and perform all labor, as described in the specifications and shown on the drawings, for the following sum. Bid shall be good for 60 days.

BASE BID:

Complete Work for the Stipulated Sum of \$ _____

ALTERNATE 1:

Masonry Wall Insulation (1980 Building) ADD \$ _____

ALTERNATE 2:

Reroofing ADD \$ _____

ALTERNATE 3:

Window Replacement (1980 Building) ADD \$ _____

ALTERNATE 4:

Access Control Hardware ADD \$ _____

ALTERNATE 5:

Auditorium Scaffolding ADD \$ _____

ALTERNATE 6:

Auditorium Ceiling ADD \$ _____

ALTERNATE 7:

Kool Duct ADD \$ _____

LIST OF MAJOR SUBCONTRACTORS:

Plumbing Subcontractor: _____

HVAC Subcontractor: _____

Electrical Subcontractor: _____

Addenda received and included in this Bid: No. _____, _____, _____, _____, _____.

Attachments to Bid Form (submit 2 copies):

- ☐ Bid Guaranty and Contract Bond (or certified check)
- ☐ Out-of-State Corporation Information
- ☐ Hourly Rates and Markups

SIGNED:

(Signature)

(Name of Company or Corporation)

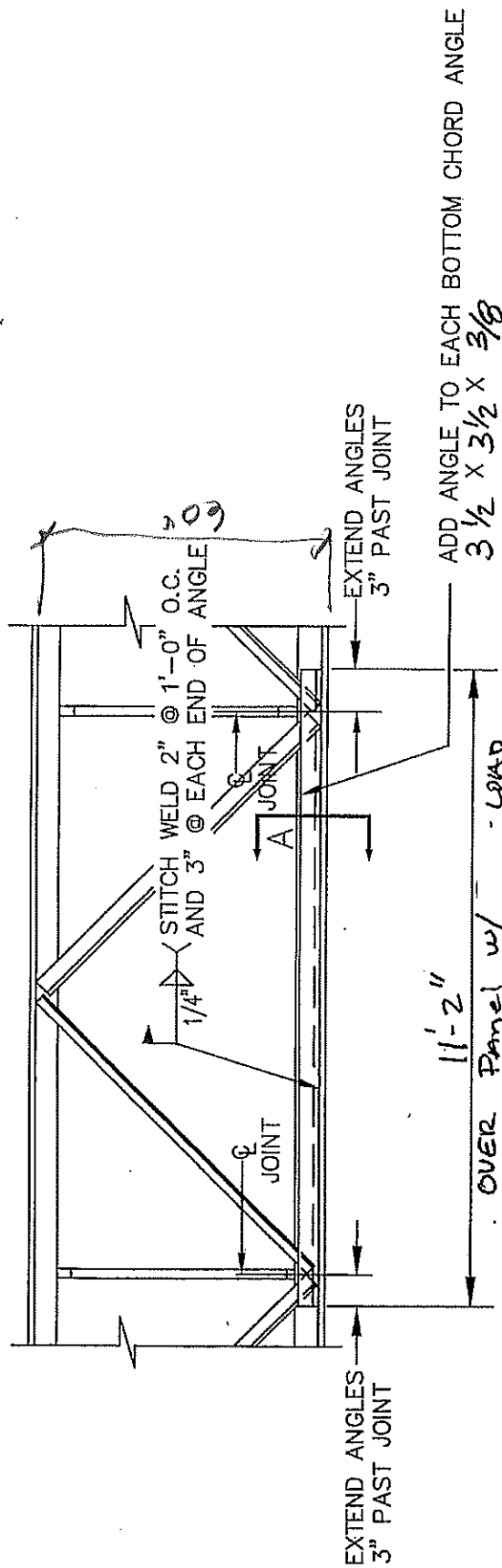
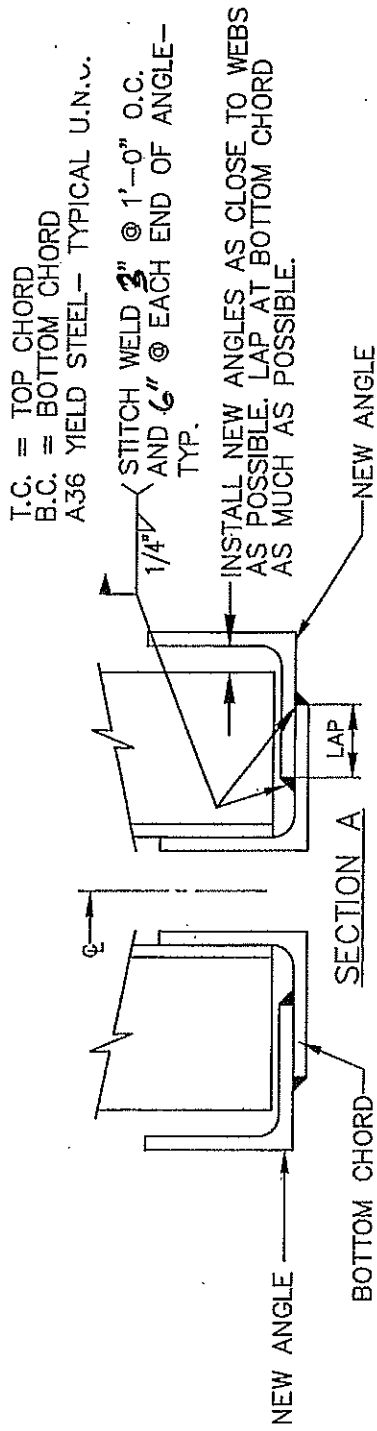
(Printed Name)

(Business Address)

(Title)

(Date of Signature)

(Phone)



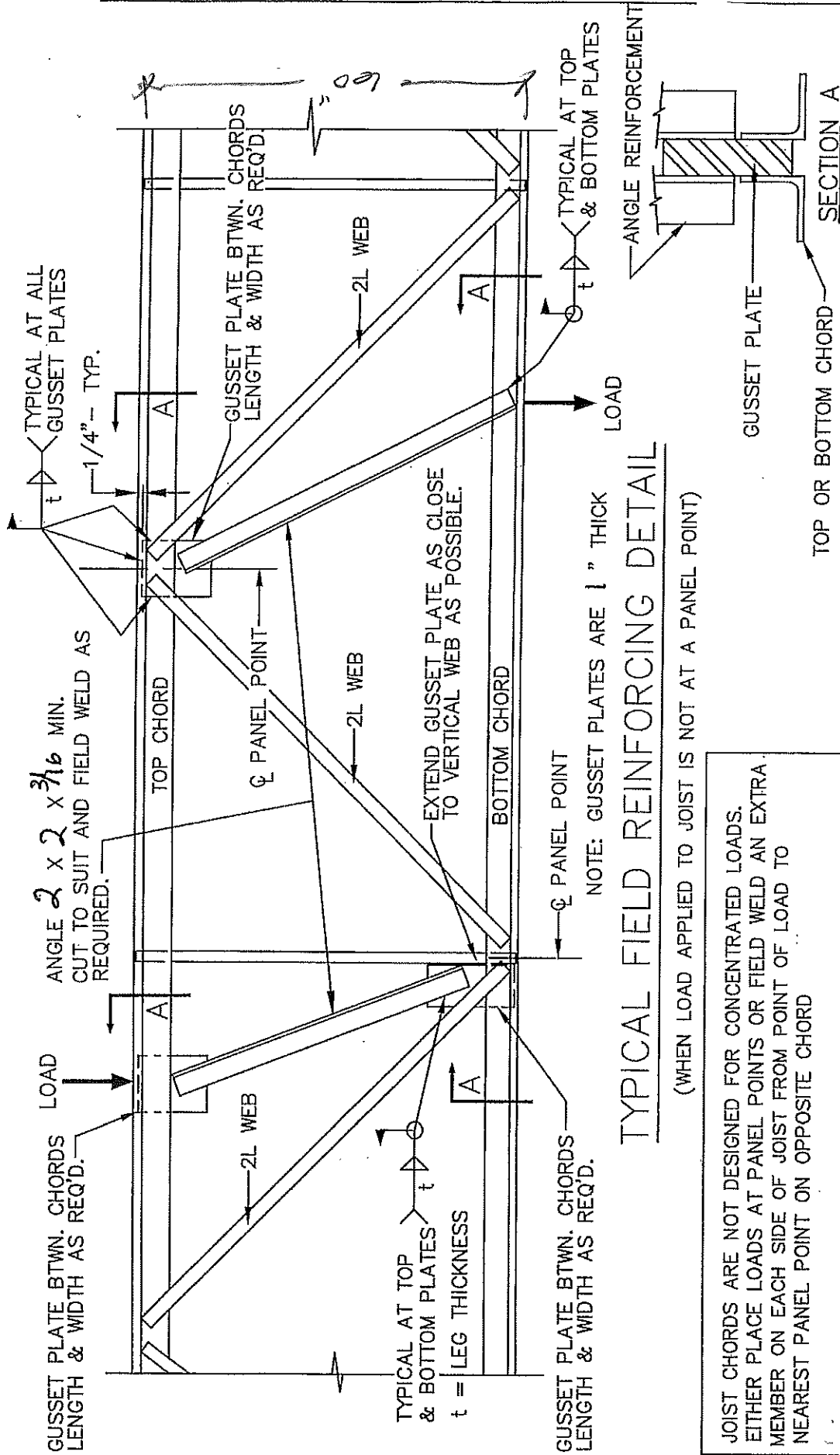
JOIST MODIFICATION PROCEDURE:

- STEP 1: INSTALL ANGLE REINFORCEMENT TO EACH SIDE OF BOTTOM CHORD ANGLES AS SHOWN.
 STEP 2: WELD NEW TWO ANGLES TO BOTTOM CHORDS AS SHOWN.

ALL WELDING TO BE DONE WITH E70XX ELECTRODES BY A.W.S. CERTIFIED WELDER IN ACCORDANCE WITH A.W.S. STANDARDS.
 FIELD MODIFICATION FOR:

CHORD REINFORCEMENT (2 L'S) FOR GIRDER: BOTTOM CHORD

GUSSET PLATE BTWN. CHORDS
LENGTH & WIDTH AS REQ'D.



NOTE: GUSSET PLATES ARE 1" THICK

TYPICAL FIELD FIELD REINFORCING DETAIL

(WHEN LOAD APPLIED TO JOIST IS NOT AT A PANEL POINT)

JOIST CHORDS ARE NOT DESIGNED FOR CONCENTRATED LOADS.

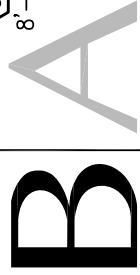
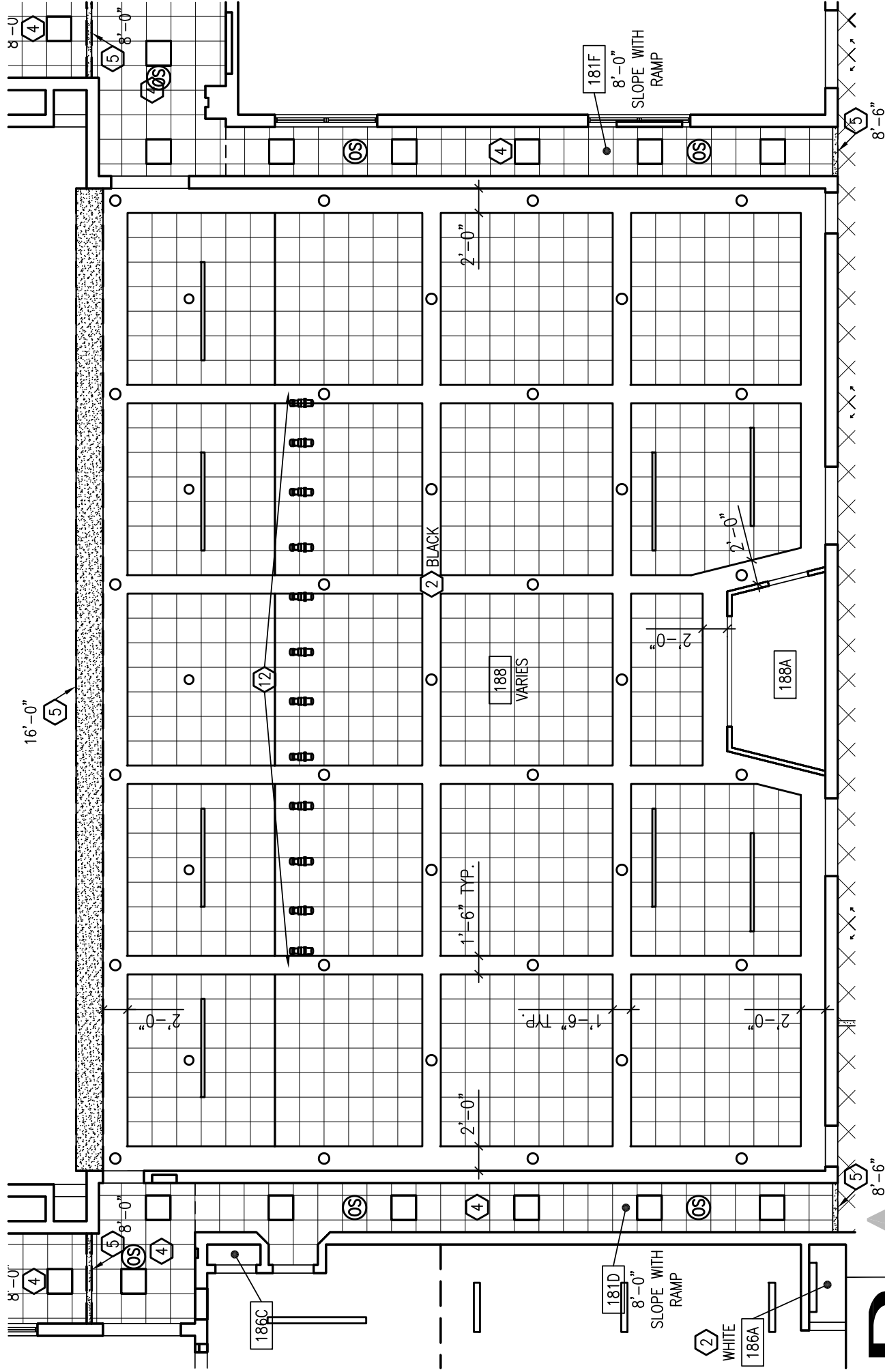
MEMBER ON EACH SIDE OF JOIST FROM POINT OF LOAD TO NEAREST PANEL POINT ON OPPOSITE CHORD

TOP OR BOTTOM CHORD

NOTE: WEBS NOT SHOWN.

ALL WELDING TO BE DONE WITH E/OXX ELECTRODES BY A.W.S. CERTIFIED WELDER IN ACCORDANCE WITH A.W.S. STANDARDS.
FIELD MODIFICATION FOR:

CHORD REINFORCEMENT (2 L'S) ON GUSSET PLATES FOR DOUBLE ANGLE INTERIOR WEBS



BEILHARZ
ARCHITECTS
INCORPORATED

STRYKER LOCAL SCHOOLS

AE121a

ADDENDUM 4

0' 10'-8"

2-28-19

B6-4512 701½ West First Street • Defiance, OH 43512 • Phone 419-782-6211 • www.beilharzarchitects.com

