



701½ West First Street
Defiance, OH 43512
Phone 419-782-6211
architects@beilharzinc.com

March 29, 2023

DEFIANCE COUNTY EAST
Storage Building
Defiance, Ohio

C2-4854

ADDENDUM 1

This Addendum becomes a part of the Contract Documents and modifies them only to the extent herein set forth. Bidders shall acknowledge receipt of this Addendum on the Bid Form. Each bidder is responsible for distribution of information conveyed by this Addendum to its subbidders and suppliers.

Attachments: Drawings C-102, E-101 (revised)
Bid Question Log #1

ITEM NO. 1: Section 074313 – Metal Roof and Wall Panels

Paragraph 2.01: Add McElroy Metal, Inc. and Ramco Supply.

Paragraph 2.05.B: Add MFM Building Products Corp.; Ultra HT Wind & Water Seal.

ITEM NO. 2: Sheet C-101 – Site Demolition Plan

Revise Keynote 3 to read: Remove light pole and abandon overhead power from Existing Building #2. Rework underground electric as necessary to maintain energized system for balance of light fixtures to remain; refer to Electrical.

ITEM NO. 3: Sheet C-102 – Site Utility Plan

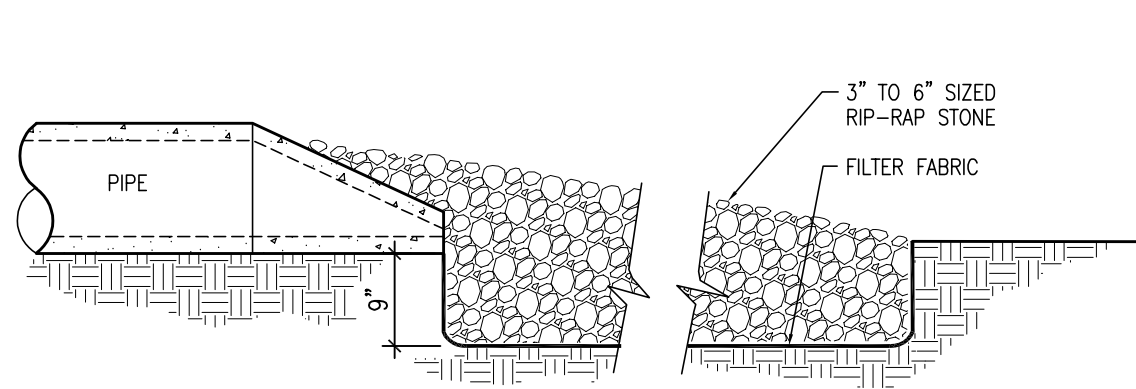
Refer to attached revised Drawing for underground electrical to existing light poles. Refeed existing site lighting from new building.

ITEM NO. 4: Sheet E-101 – Electrical Plan, Schedules, and Details

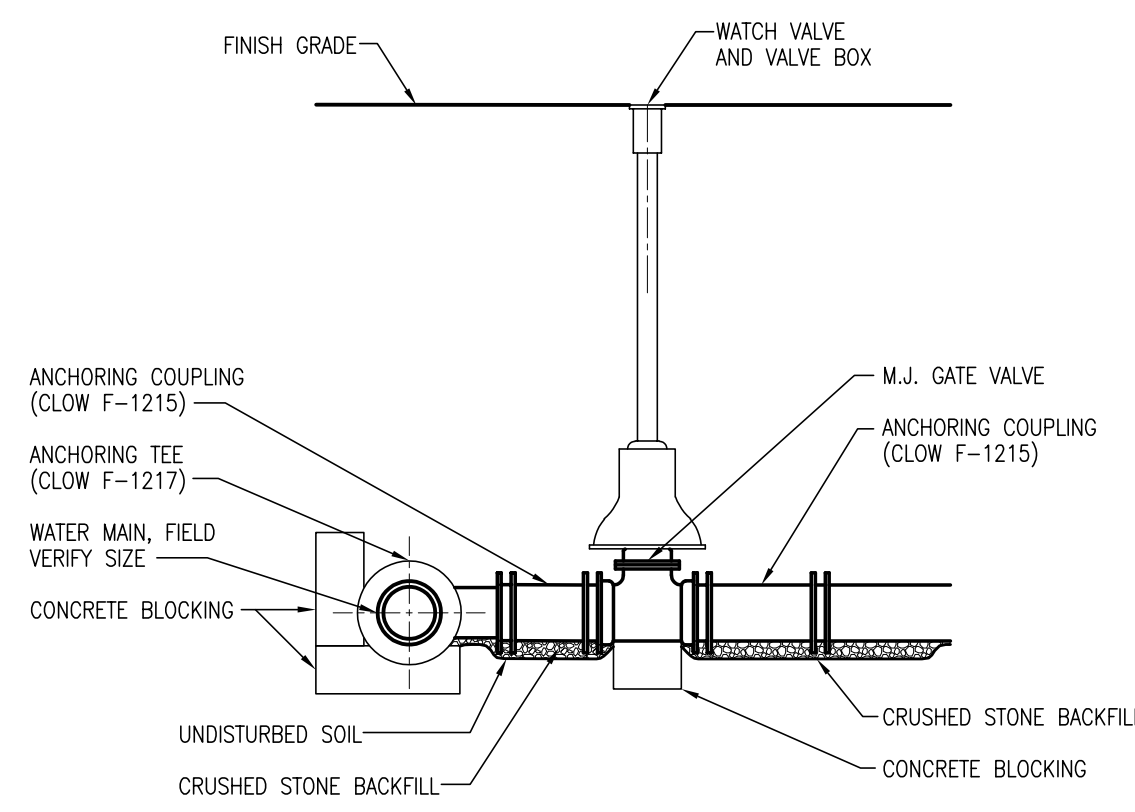
Refer to attached revised Drawing for circuiting and controls for existing site lighting and building exterior lighting.

END OF ADDENDUM

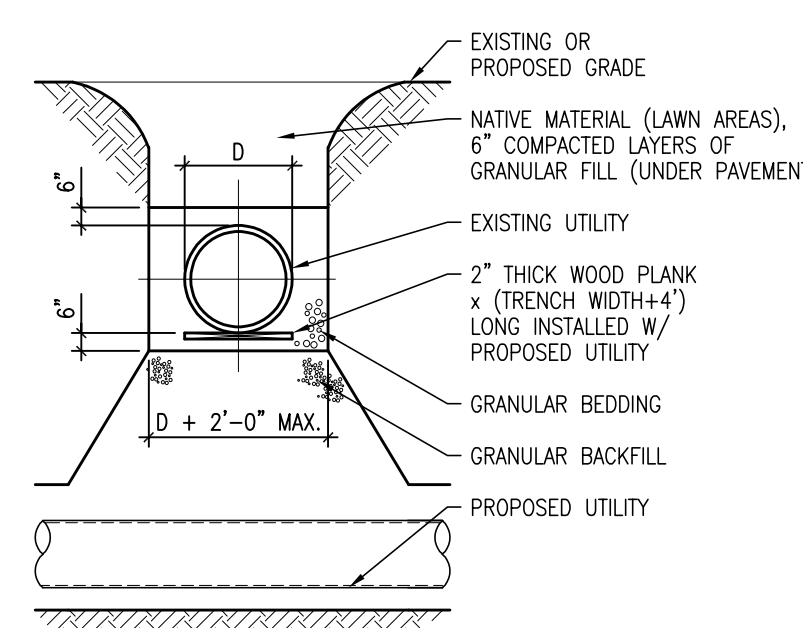
SCALE: 3/32"=1'-0"
SCALE: 1/8"=1'-0"
SCALE: 3/16"=1'-0"
SCALE: 1/4"=1'-0"
SCALE: 1/2"=1'-0"
SCALE: 3/4"=1'-0"
SCALE: 1"=1'-0"
SCALE: 1 1/2"=1'-0"
SCALE: 1 1/2"=1'-0"



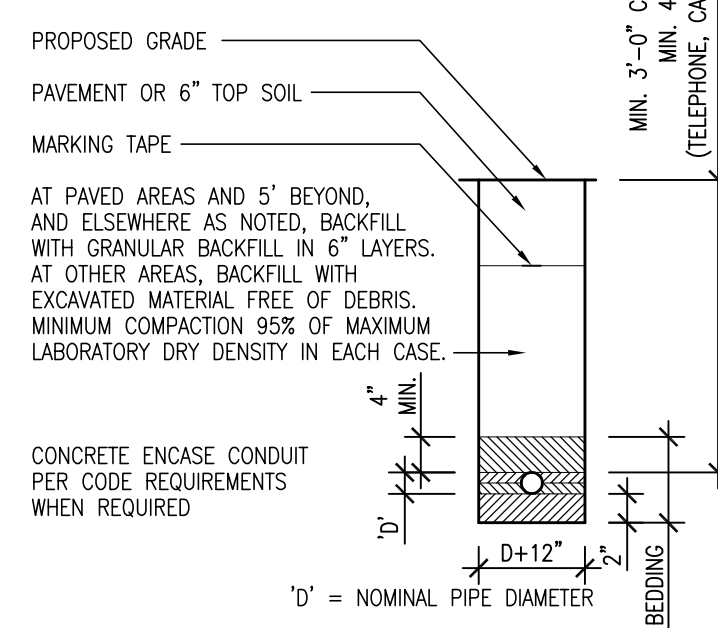
10 PIPE OUTLET AT DEFINED CHANNEL
C-102 SCALE: NONE



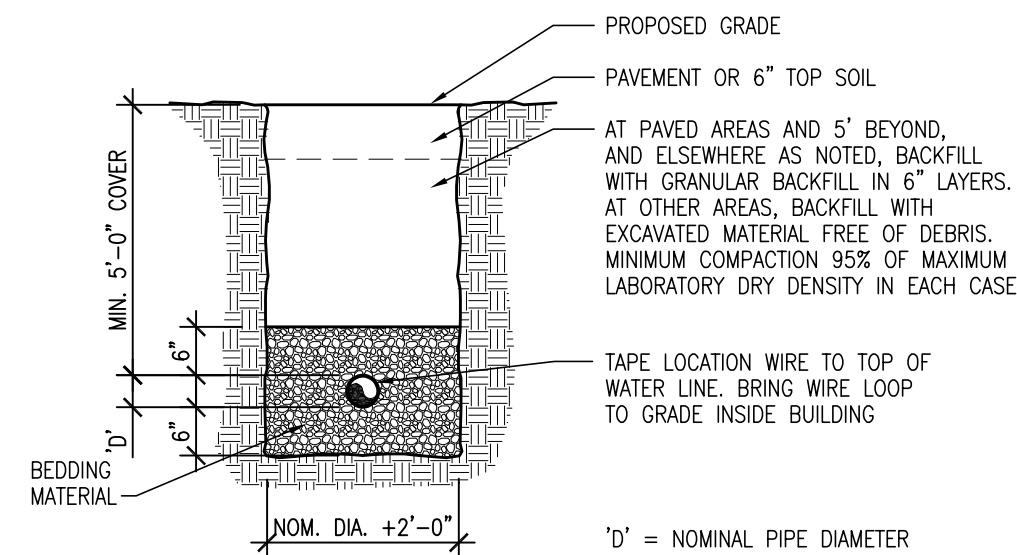
9 WATER SERVICE DETAIL
C-102 SCALE: NONE



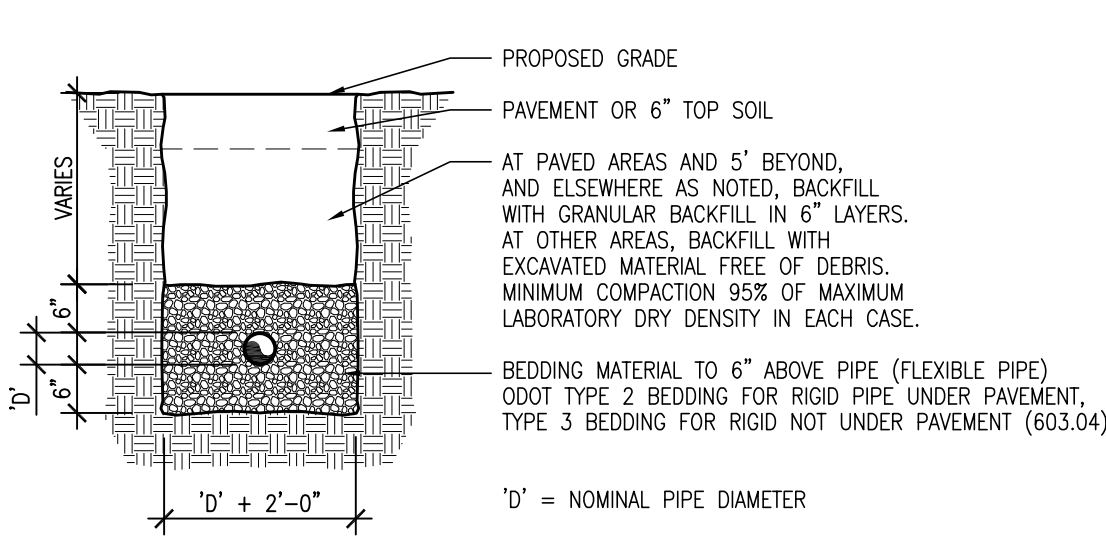
8 TYPICAL UTILITY CROSSING DETAIL
C-102 SCALE: NOT TO SCALE



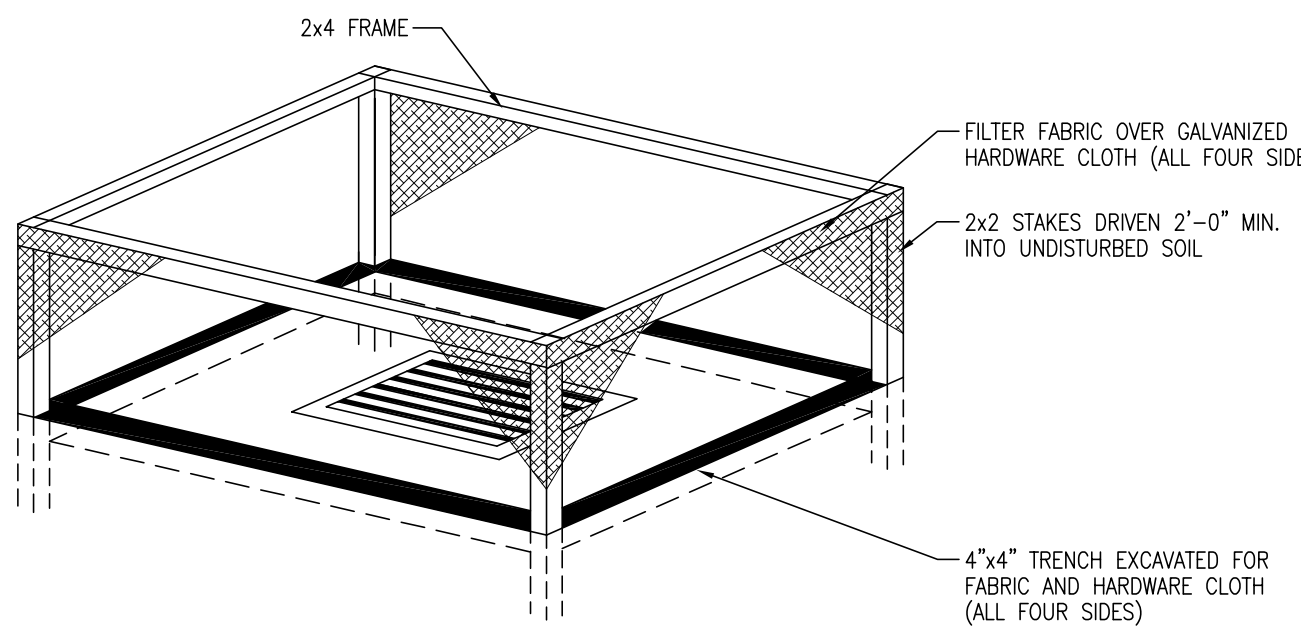
7 CONDUIT TRENCH DETAIL
C-102 SCALE: NOT TO SCALE



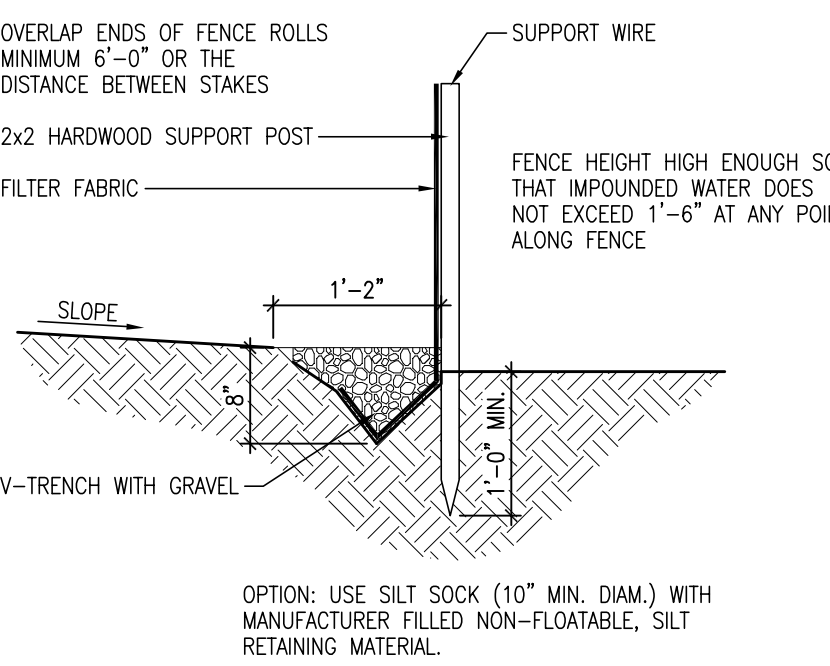
6 WATER LINE TRENCH DETAIL
C-102 SCALE: NOT TO SCALE



5 STORM & SANITARY SEWER TRENCH DETAIL
C-102 SCALE: NOT TO SCALE



4 CATCH BASIN SILT PROTECTION
C-102 SCALE: NOT TO SCALE



3 SILT FENCE DETAIL
C-102 SCALE: NOT TO SCALE

GENERAL GRADING NOTES

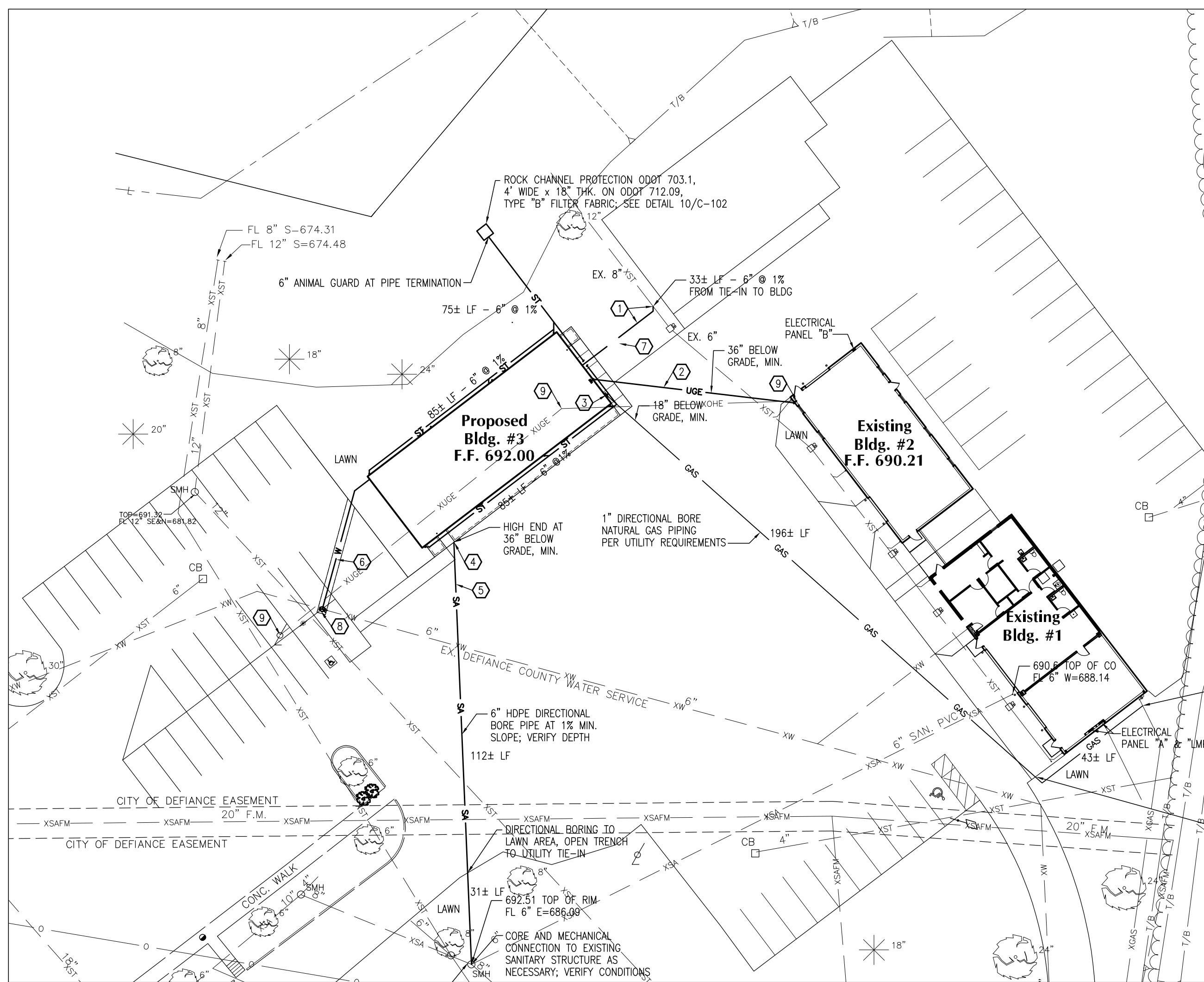
- REFER TO BUILDING FOUNDATION DRAWINGS FOR SIZES AND ELEVATIONS OF COMPONENTS.
- SIDEWALKS SHALL HAVE A RUNNING SLOPE NOT STEEPER THAN 1:20 (5%, OR 5/8" PER FT.) AND A CROSS SLOPE NOT STEEPER THAN 1:48 (2%, OR 1/4" PER FT.) UNLESS OTHERWISE NOTED.
- CONSTRUCT EMBANKMENT IN ACCORDANCE WITH ODOT 203. PLACE TOP SOIL AS THE FINAL LIFT IN AREAS INTENDED TO BE PERMANENT LAWN AREAS. COMPACTION TESTING WILL BE BY OWNER'S SOILS ENGINEER. EXCESS SOIL AND MATERIAL FROM EARTHWORK AND FOUNDATION EXCAVATION SHALL BE PLACED ON-SITE AS DIRECTED WITH COST INCLUDED IN BASE BID.
- AFTER GRADING TO DRAIN, SEED AND MULCH ALL AREAS DISTURBED DURING CONSTRUCTION. SEEDING SHALL BE TEMPORARY, PERMANENT OR BOTH, AS APPLICABLE.

KEYNOTE LEGEND

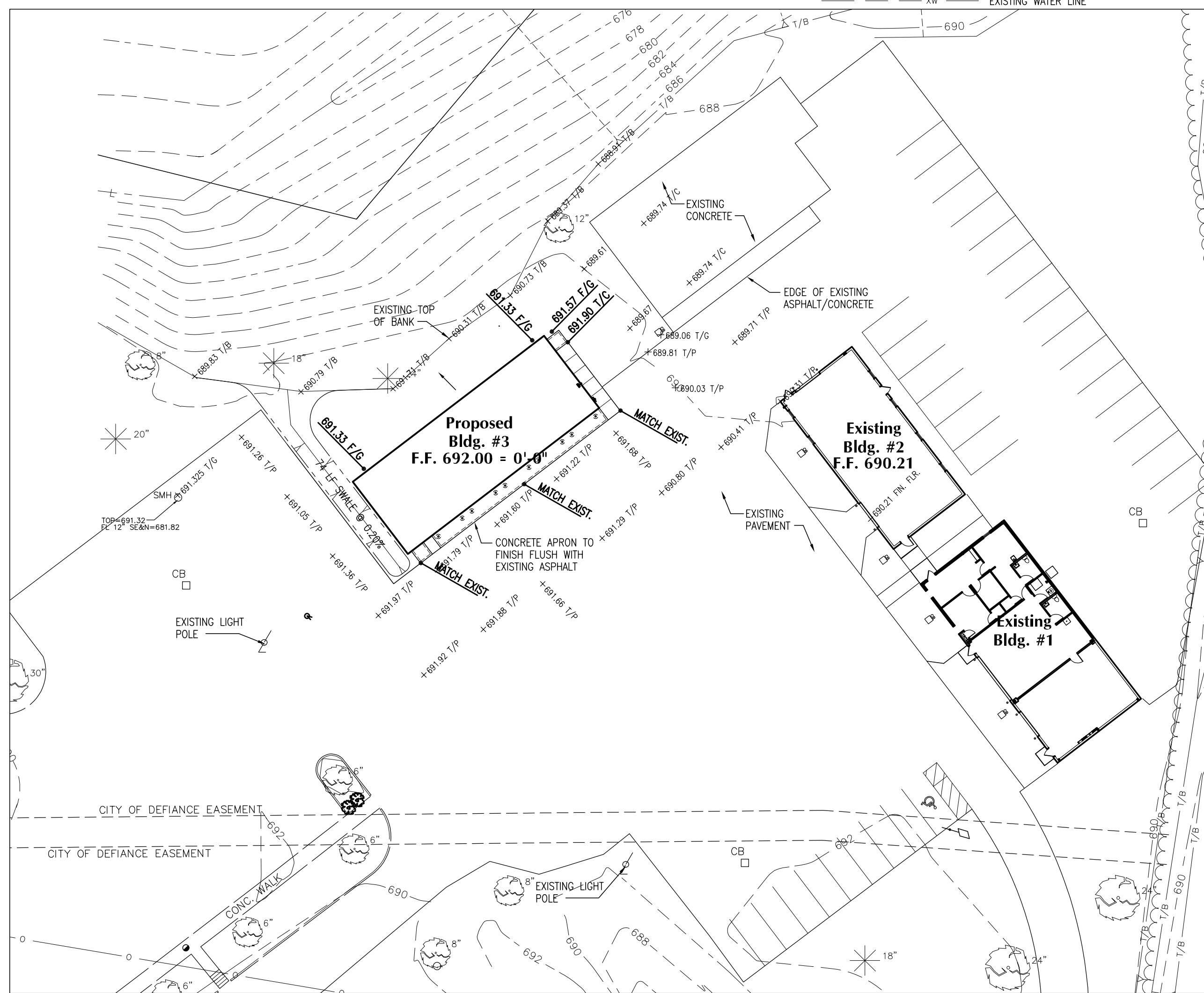
- 6" STORM LINE, PROVIDE ALL FITTINGS AND MODIFICATIONS NECESSARY TO TIE THE NEW LINE INTO EXISTING, FIELD VERIFY EXACT SIZE, LOCATION, INVERT AND CONDITION
- 1 1/4" DIRECTIONAL BORE AND CONDUIT FOR ELECTRICAL SERVICE FROM EXISTING BUILDING TO NEW ELECTRICAL SERVICE PANEL, 90± LF. COORDINATE WORK WITH E.C.
- 1" DIRECTIONAL BORE AND PIPE FOR GAS SERVICE FROM METER LOCATION TO LAWN, 196± LF. VERIFY PIPE AND COORDINATE ALL WORK AND REQUIREMENTS WITH GAS UTILITY COMPANY
- SANITARY CLEAN OUT, SEE DETAIL 7/P-101
- 6" DIRECTIONAL BORE AND PIPE FOR SANITARY FROM CLEANOUT TO EXISTING SANITARY, 112± LF
- OPEN-CUT TRENCH FOR 1" WATER LINE SERVICE FROM BUILDING FACE TO EXISTING WATER WATER LINE, 60± LF. VERIFY AND COORDINATE WITH CITY WATER DEPARTMENT
- OIL/WATER INTERCEPTOR, REFER TO PLUMBING
- P.C. TO INSTALL TAPPING SLEEVE, SADDLE AND VALVE WITH CAST IRON BOX TO GRADE, SEE DETAIL 7/P-101
- ABANDON OVERHEAD POWER FROM EXISTING BUILDING #2. REWORK UNDERGROUND ELECTRIC AS NECESSARY TO MAINTAIN ENERGIZED SYSTEM, REFER TO ELECTRICAL.

LEGEND

T/P	TOP OF PAVEMENT
F/G	TOP OF FINISH GRADE
T/C	TOP OF CONCRETE
T/G	TOP OF GRATE
PROPOSED ELEVATION (FIELD VERIFY ALL CONDITIONS)	
— UGE —	PROPOSED UNDERGROUND ELECTRICAL
— GAS —	PROPOSED GAS LINE
— ST —	PROPOSED STORM LINE
— SA —	PROPOSED SANITARY LINE
— W —	PROPOSED WATER LINE
— XOHE —	EXISTING OVERHEAD ELECTRIC
— XSAFM —	EXISTING SANITARY FORCE MAIN
— XSA —	EXISTING SANITARY LINE
— XST —	EXISTING STORM LINE
— XGAS —	EXISTING GAS LINE
— XW —	EXISTING WATER LINE



2 SITE UTILITY PLAN
C-102 SCALE: 1"=30'



1 SITE GRADING PLAN
C-102 SCALE: 1"=30'



B | A
BEILHARZ
ARCHITECTS
INCORPORATED



ISSUE DATE
03-16-2023 FOR BID/PERMITS
2 03-29-2023 ADDENDUM #1

© 2022 BEILHARZ ARCHITECTS, INC.
THE CONTENT OF THIS DRAWING IS NOT INTENDED TO BE SUBSTITUTED FOR ANY PROFESSIONAL ENGINEER, ARCHITECT, OR OTHER EXPERT FOR ANY PURPOSE OTHER THAN THE INTENDED PURPOSE OF THIS DOCUMENT. ANY REUSE OR REPRODUCTION WITHOUT WRITTEN VERIFICATION AND APPROVAL BY THE ARCHITECT FOR THE SPECIFIC PURPOSE INTENDED SHALL BE AT THE USER'S SOLE RISK AND WITHOUT LIABILITY OR LEGAL EXPOSURE TO THE ARCHITECT.

DEFIANCE COUNTY EAST
PROPOSED STORAGE BUILDING
1300 EAST SECOND STREET
DEFIANCE, OHIO 43512

SITE GRADING PLAN
SITE UTILITY PLAN

PROJECT: C2-4854

DRAWN BY: JO

CHECKED BY: JO

SHEET

C-102

3 OF 10

701-1/2 WEST FIRST STREET • DEFIANCE • OHIO • 43512 • PHONE • 419 • 782 • 6211 • www.beilharzarchitects.com



701½ West First Street
Defiance, OH 43512
Phone 419-782-6211
architects@beilharzinc.com

March 29, 2023

DEFIANCE COUNTY EAST
Storage Building
Defiance, Ohio

C2-4854

BID QUESTION LOG #1

The following questions and answers are distributed for supplemental information and clarification, and are not part of the Contract Documents. Questions answered by Addendum items are not necessarily repeated in this document.

- Q1. Is a temporary fence required during the construction of the project?
- A. The Owner recommends but does not require the temporary construction fence.
- Q2. Were you wanting a separate gas line and new meter at the new building, or just a fuel line coming off the existing meter set of existing building #1?
- A. Include the gas line and meter as shown on C-102 and M-101. Tie into the existing gas line before the Existing Building #1 meter.

pEND OF BID QUESTION LOG #1